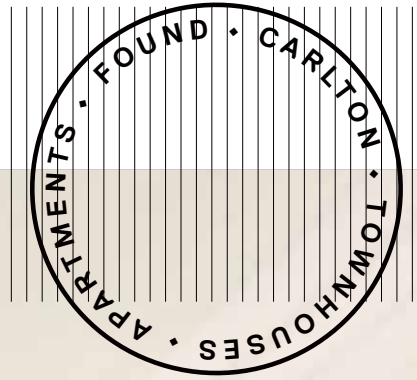


FOUND

AT THE HEART OF URBAN LIVING

ISSUE 01
THESUPERCOOL



Home is where the art is.

TheSuperCool takes the often bland and soulless retail experience and flips it into something meaningful, personal, playful and well...super cool.

1 - 3 BEDROOM APARTMENTS AND TOWNHOUSES
PALMERSTON STREET, CARLTON
FOUNDCARLTON.COM.AU

‘Something a little bit more left of centre.’

PLUSH TOWELS AND GEOMETRIC-
PATTERNED BATH MATS DESIGNED
BY ZIPORAH LIFESTYLE IN
MELBOURNE SIT ALONGSIDE
CONCRETE POT PLANTS, WALL
ART BY GERMAN DESIGNER ANNY
WHO AND BEDDING BY LOCAL
BOUTIQUE LINEN DESIGNERS,
KIP & CO. CUSHIONS



THESUPERCOOL, FITZROY

THE SUBURB OF FITZROY IS NO STRANGER TO DESIGNER HOMEWARES STORES WITH WINDOW DISPLAYS THAT MAKE YOU WANT TO RETHINK YOUR CURRENT DIGS ENTIRELY. BUT THESUPERCOOL IS NEXT LEVEL. THAT'S THANKS TO ITS ALREADY-HOMELY FEEL; YOU DON'T JUST IMAGINE THE CONTENTS OF THE SHOP AT YOUR PLACE, YOU FEEL AT HOME THERE. THIS ATMOSPHERE WAS CREATED VERY INTENTIONALLY.

Husband and wife David "Noonie" Nunez and Kate Vandermeer opened TheSuperCool after regular customers to their store in South Melbourne started asking when they would establish a north-side outpost. When they first investigated the shop's site on the corner of Nicholson and Kerr Street, the pair fell in love with the heritage-listed building with exposed-brick walls, polished concrete floors and the natural light pouring in. Unusually for a retail space, there is an arch in the middle of the room. It subtly separates the store into zones, much like a home would be organised, allowing for a more natural, less hard-sell retail experience. "The energy of the shop is amazing," says Vandermeer.

TheSuperCool opened there in 2014. It stocks a mix of independent Australian designers and items from overseas. "The people coming into our store are looking to deck out their house with something a little bit more left of centre," says Vandermeer. "And we meet parents who want things for their kids that aren't daggy, and that are gender neutral and more design driven."

Plush towels and geometric-patterned bath mats designed by Ziporah Lifestyle in Melbourne sit alongside concrete pot plants, wall art by German designer Anny Who and bedding by local boutique linen designers, Kip & Co. Cushions, books, cards and playful cloud-shaped wall hooks all encourage visitors to curate a home environment that reflects its inhabitants.

The location of the store, not strictly part of any retail hub, means that Vandermeer and Nunez don't treat the space like a traditional retail space. The pair installed a café, with an entrance on Kerr Street. It encourages visitors to browse, sit with a coffee and a magazine and then perhaps continue with their shopping; no rush, no fuss.

"The café is something we saw a lot of when we were travelling in Berlin and in Chicago, and a little bit in New York, too," says Vandermeer. "They had this real mix of lifestyle. It wasn't just shopping for shopping's sake. You go in and you feel part of something, you have a great experience."

The Designer Nights hosted at TheSuperCool are an extension of this idea. "Different designers we work with and stock come in and talk about how they got started," says Vandermeer. "And we invite our small-business customers to come in and learn. So we try to do things that are more about belonging to TheSuperCool, rather than just, 'this is where I go to buy stuff.'"

That being said, the "buying stuff" is very tempting, too.

THESUPERCOOL
280 Nicholson St, Fitzroy





THE EVERLEIGH
150-156 Gertrude St Fitzroy

The Everleigh sets the standard for drinking in Melbourne, and in 2015 it was voted among the top-50 best bars in the world (it came in at number 25). The attention to detail applied to every aspect of this Gertrude Street nightspot takes getting a drink into the realm of the sublime. Bartenders hand-cut ice from enormous, solid, clear blocks made by owner Michael Madrusan's artisanal ice project, Navy Strength Ice Co. The space celebrates what Madrusan calls The Golden Age of Bartending; a speakeasy style with gilded mirrors, a marble bar, taxidermy, candle-lit booths and chandelier lighting. The flair of the era is apparent in the drinks menu, too: Daiquiri's, Old Fashioneds, Sazeracs and Fizzes. Leave the world as you know it behind for an intimate drink.



The Vertue Of The Coffee Drink

THE VERTUE OF THE COFFEE DRINK
8 Raffa Place, Carlton

Forget everything you thought you knew about Carlton. This micro-roastery, café and kitchen down a laneway may be physically close to the bustle of Lygon Street, but its vibe is somewhere else entirely. This beautifully designed hideaway opened in February 2015, and has since become a destination for those in the know. "It's a little oasis, and I wanted to try to capture that with the design," says owner Mike Cracknall. Coffee is a serious topic at Vertue. It is always seasonal and roasted according to its type. The menu includes café classics, but there are dishes that will raise brows, too. Such as the Meatball Sub, with pork meatballs, provolone, apple slaw and jalapenos served with beer-battered onion rings.



Fitzroy Nursery

FITZROY NURSERY
390 Brunswick St, Fitzroy

This inner-city nursery has been in its florid corner spot on Brunswick Street for more than 30 years, keeping many neighbourhood green thumbs satisfied. As well as offering water features, citrus trees and any type of outdoor garden plant you can think of (and many you can't), it also specialises in indoor plants and balcony set-ups for those with limited outdoor space. It sells all the gardening kit you'll need and the staff can be relied upon for sound advice. Even if you're not in the market for a new fern (they do very well in bathrooms, don't overwater), a wander through the nursery away from the grind of Brunswick Street is never a bad idea.

'A sandwich shop with a rock and roll attitude.'

SMITH & DELI



Modern Times



Young Bloods Diner

YOUNG BLOODS DINER
60 Rose St, Fitzroy

With its rooftop bar and view over Fitzroy, a courtyard and welcoming dining room, Young Bloods is a day-to-night venue. It's by the brothers behind The Rose Street Artists Market and has the same fun, accessible, stay-a-while vibe – in an industrial but refined space. The menu covers classic café dishes (burgers, smashed avo, eggs), Allpress coffee and cold-pressed juices.

PIDAPIPÓ
299 Lygon St, Carlton

Owner of Pidapipó gelateria, Lisa Valmorbida, hand makes fresh gelato at this Lygon Street hot-spot everyday. No surprises there: she learned her craft at Carpigiani Gelato University, Italy. The store is vibrant and young at heart, but tradition flows through every part of the Pidapipó operation. Flavours change regularly, but look out for mocha fudge, nectarine and banoffee. And there's Nutella on tap.

SMITH & DELI
111 Moor St, Fitzroy

This all-vegan sandwich shop and grocer has a rock-and-roll attitude. It also has everything you need for a grab-and-go breakfast, lunch or dinner. Sandwiches are an event here and come US-style: chock-full and huge (go for The Rueben). The sweets push boundaries (S'more pie, anyone?) and change everyday, but the doughnut selection, cookies and croissants are what's snapped up fastest.



Pidapipó



Smith & Deli

‘Rathdowne Village avoids being an ordinary grocery shopping experience.’

CLAY
SKINNER & HACKETT



Clay

CLAY 719 Rathdowne St, Fitzroy

This recently renovated inner-city fine-food store specialises in organic and wholefoods. Its rustic fit-out complements the goods on the shelves; organic fruits and vegetables, milk, fresh bread, organic meat and supplements. It's part of Rathdowne Village, so it avoids being an ordinary grocery-shopping experience.

THE TOWN MOUSE 312 Drummond St, Carlton

This neighbourhood restaurant is considered among this city's best. But you can forget stuffy fine dining, although the quality, the use of the best produce and presentation all lean that way. Its perfect execution of laid-back dining, low-key, attentive service and design make this a place you can relax in, fulfilling its self-proclaimed aim to "celebrate the everyday".



The Town Mouse



Centre for Contemporary Photography

CENTRE FOR CONTEMPORARY PHOTOGRAPHY (CCP) 404 George St, Fitzroy

This enclave for the photographic arts exists to bring contemporary photography to the public. Across five exhibition spaces it exhibits established and emerging artists and hosts education projects, such as its Artists Floor Talks. Swing past after dark to view the Night Projection Window visible from George and Kerr Streets.

FITZROY GARDENS East Melbourne

A patch of calm right near the city centre. It's home to the conservatory, which puts on five different floral displays a year, Cook's Cottage and the Pavilion Café right near the Fairies Tree. But really, all you need is some friends and a picnic blanket to make the most of this oasis.



Fitzroy Gardens

Easey's



EASEY'S 3/48 Easey St, Collingwood

There's a real train carriage on top of the Collingwood building that houses Easey's. That sets the tone for the experience inside this five-storey burger joint, café and rooftop. Seating is covered in retro train upholstery, and the walls are covered in graffiti. Old-school train tickets decorate the tables in Zone 1 downstairs. Grab an Easey Cheesy, the signature burger, a total salad-free zone.

THIRD DRAWER DOWN 93 George St, Fitzroy

A repository of off-kilter, clever design pieces for your life and home. Here you'll find towels, toys, wall art and designer curios all presented in an atmosphere that has its tongue firmly in its cheek. And now you know where to find that giant inflatable rubber ducky you've been looking for all your life.

MUD 181 Gertrude St, Fitzroy

Homewares and ceramics brand Mud combines a candy colour palette, minimalist design and handmade production processes to create pieces that are functional and bring beauty to their everyday use. The window displays at this Fitzroy store make the most of its products' eye-catching colours and silhouettes.

GREAT DANE 175 Johnston St, Fitzroy

This furniture stalwart among the throng on Johnston Street specialises in Scandinavian furniture and homewares. Founder and director Anton Assaad uses his network of connections in Sweden and Denmark to bring the best to Melbourne. His finds include rugs, lighting, curios and toys.

SKINNER & HACKETT 400 Rathdowne St, Carlton

This local butcher specialises in free-range, grass-fed, ethically raised meat. Part of the Rathdowne Village shopping strip, it's hard not to wish all shopping experiences could be like this: local, high quality and with incredible service. The knowledgeable and helpful staff are always happy to help you choose the best cut and advise you on how to cook and serve it best.

Third Drawer Down



Great Dane



Mud



Skinner & Hackett



CARLTON GARDENS
Carlton

The architectural juxtaposition between the heritage-listed Royal Exhibition Building and the Melbourne Museum sets the tone for a stroll through one of Melbourne's best inner-city green spaces. There is a playground at the north-western corner, walking paths and tennis courts. Lie in the shade with a book on a patch of soft green near the fountain for some serious serenity.

HELL OF THE NORTH
135 Greeves St

The European-inspired grazing menu at this bar and bistro is all based on local, seasonal produce. The space is elegant but not stuffy, and its hints of brass and steel are softened by wood and greenery. Although the atmosphere is casual, the menu is informed by fine dining. A supper menu is available until 1am Wednesday to Sunday – perfect for lingering.

Baker D. Chirico



BAKER D. CHIRICO (CARLTON)
178 Faraday St, Carlton

A pioneer of Melbourne's new-wave artisanal baked-goods scene, Daniel Chirico takes buying bread from necessity to singular pleasure. The wooden panelling of this architecturally designed store lets the products on the shelves speak for themselves; loaves, pastries and sandwiches. Come for your bread in the morning, grab lunch for later while you're there, and try some of its famous nougat for dessert.

‘The European inspired grazing menu is all based on local, seasonal produce.’

HELL OF THE NORTH



Hell of the North



GRUB HOLE
87-89 Moor St, Fitzroy

Grub Hole sits in an off-beat, open-air space just off Brunswick Street. Its outdoor area, the Grub Greenhouse, is perfect for warmer weather. Grub Hole inside features a mix-and-match, eclectic fit-out that creates an easily casual atmosphere. Come for ping-pong, coffee, dessert, salads and full menu of breakfast and lunch classics.

FOUND

On an avenue of green.

10

11

WITH IMAGINATIVE YET UNDERSTATED ARCHITECTURE THAT BLENDS WITH ITS INNER CITY LOCATION, FOUND IS SURROUNDED BY A WEALTH OF AMENITIES IN ONE OF MELBOURNE'S MOST EXCITING NEIGHBOURHOODS.

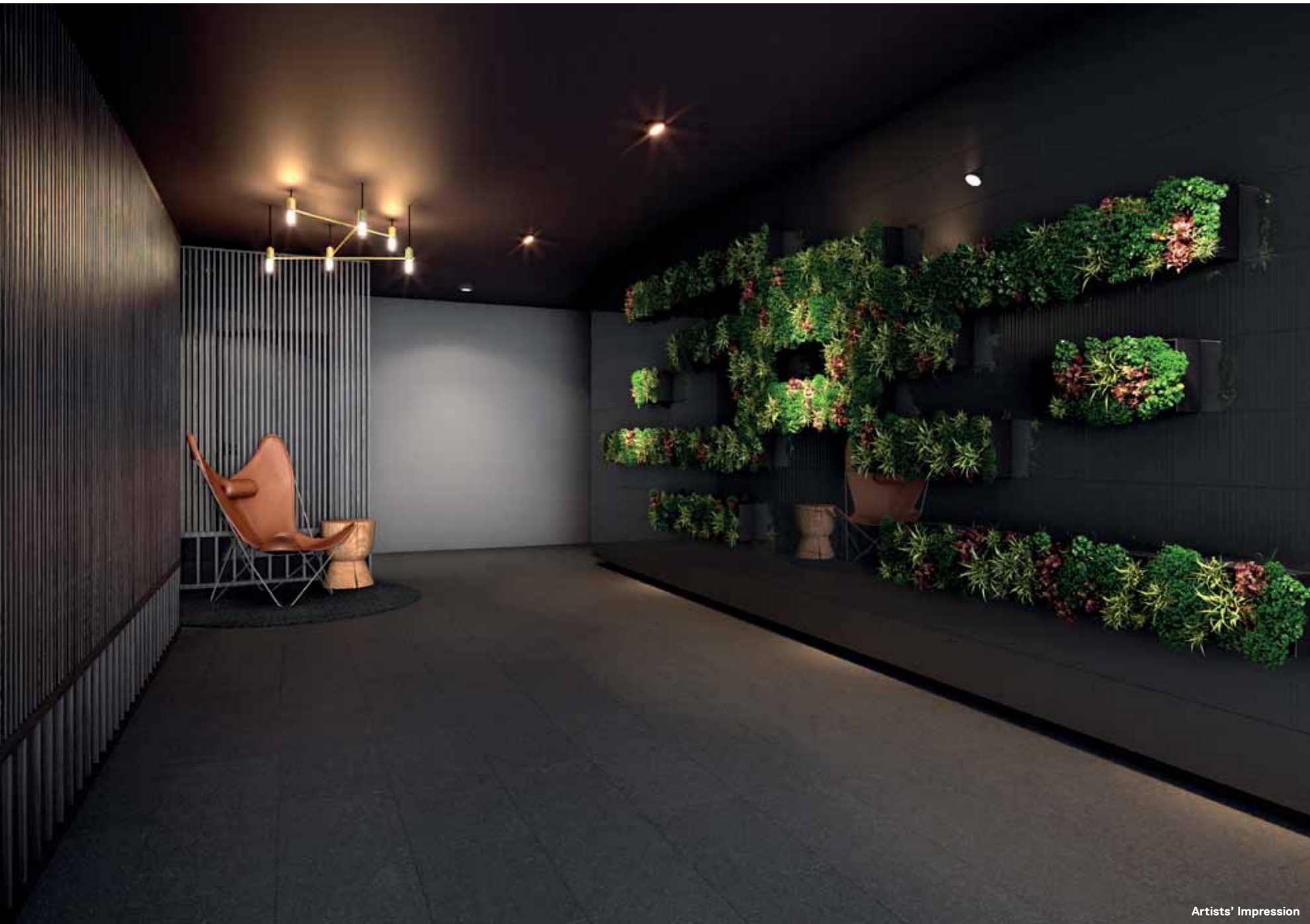
Artists' Impression



Located on the border of Carlton and Fitzroy, Found's design is inspired by the community and character of the precinct. In a nod to local architecture, Found features a mix of designer apartments and townhouses with alternating shapes and forms. With variations in depth and height, the building's clean geometric lines rise above the treetops. This meeting of unique architecture and nature are what give Found its living identity. Planter boxes are designed to house climbing plants that wrap the building in a living green façade.



Found's stylish interior scheme becomes evident the moment you step inside the building. The lobby, which features bluestone tiling, beautifully detailed walls and a splash of nature, is illuminated by an intimate lighting design to showcase a modern and inviting foyer.



FOUND

Where architecture meets considered design.

14

A LIGHT FILLED,
SPACIOUS, AIRY AND
OPEN DESIGN



Artists' Impression

FOUND APARTMENTS AND
TOWNHOUSES ARE DESIGNED TO
SUIT MODERN LIFESTYLES

Found's layout provides a mix of spacious one, one plus study, two and three bedroom apartments with assorted floorplans. Clever design principles and open plan layouts capture views and welcome sunlight into the living spaces. Many apartments feature second bathrooms and dedicated study areas.

Found also includes four exclusive townhouses, overlooking tree-lined Palmerston Street. Each with two or three bedrooms, a luxurious sense of space and delightful outdoor terraces.

The façade materiality and the building's 'stepped' form reflect the diverse cultural fabric of the surrounding community. This modern aesthetic, combined with a wealth of imaginative design features, connect Found with its cosmopolitan neighbourhood and green urban environment.

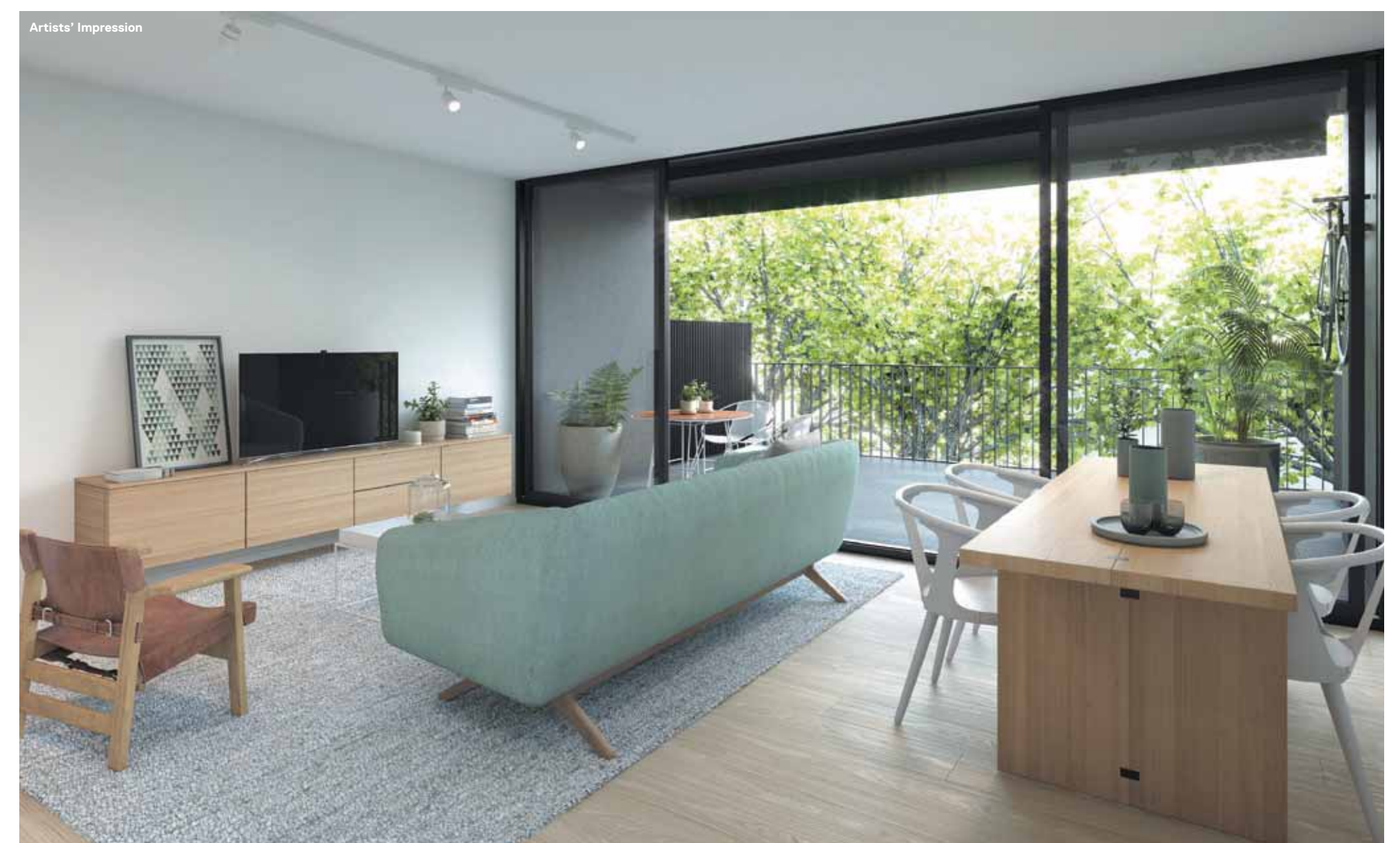
15

16



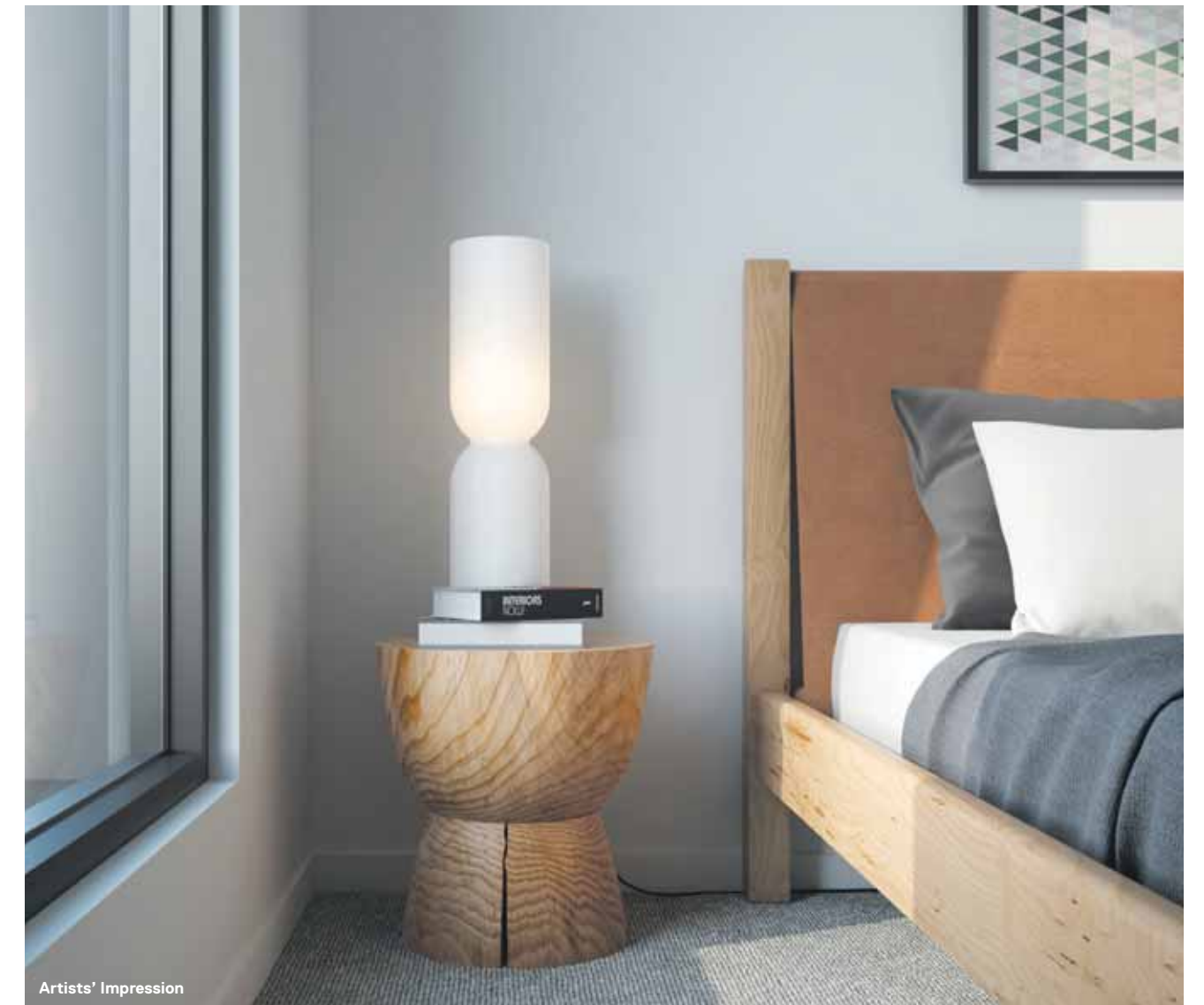
Spacious open plan living areas feature flooring with a European oak timber finish and full length windows to maximise light. Large sliding doors welcome the outside in and open onto well-proportioned, private terraces with bluestone tiling.

17





Stylish and functional kitchens offer sleek stone bench tops, island benches and ample cabinetry in a choice of dark or light colour schemes. Built-in appliance options from Fisher & Paykel, Bosch, Omega and Ilve include dishwasher, electric oven and gas cooktops. Interesting additional features such as benchtop herb boxes add a creative edge to the kitchen's low-maintenance design and modern aesthetic.



Escape the rush of modern life in fresh and relaxing interiors. The bedrooms have been carefully planned to maximise space and amenity. Floor-to-ceiling built-in robes provide additional storage space, while pure wool carpets underfoot convey a sense of warmth and comfort.

Bathrooms are generously sized and come with plenty of storage spaces. Stone-top vanities are complemented by wall-to-wall tiling in both mosaic and terrazzo finishes. With feature pendant lighting, crisp lines and modern fixtures throughout, bathrooms come in a choice of dark or light colour schemes to suit your sense of style.



FOUND

Luxury townhouses for premium inner-city living.

FOUND'S DESIGN
REINTERPRETS AND
BUILDS UPON CARLTON'S
LONG HISTORY OF ICONIC
TOWNHOUSES.

These luxurious two and three bedroom residences take Found's aesthetic to its ultimate ideal. Individual entryways directly from Palmerston Street are complemented by a convenient back door connecting to secure basement car parking and additional storage spaces.

Luxurious living over two spacious levels is further enhanced by expansive garden terraces and upper balconies immersed in the tranquil streetscape. Feature timber linings to balconies integrate with the living façade and blend Found into its surrounding landscape.



Artists' Impression



Artists' Impression

Whether two or three bedroom, all townhouses contain sophisticated interior design and open, sun-drenched spaces. These superior residences include fixtures and finishes of the highest quality and add a further touch of luxury to the experience of Found's overall design.

The spacious bedrooms are enhanced by large windows, providing abundant light, some of which have charming private balconies. Plush carpets and generous built-in robes complete the sense of luxury.



Artists' Impression

Driven by experience, quality and vision.



The Carlton, Carlton



Lume, Carlton

FRASERS PROPERTY AUSTRALIA

Local at heart but international of mind, Frasers Property Australia creates real places for real people. From warm family homes to dynamic spaces for business, our 90 years' experience in Australia guarantees quality and reliability every time. With S\$23 billion in assets across 77 cities around the world via our parent company Frasers Centrepoint Limited, you can be confident that we have the strength and experience to deliver what we promise. At Frasers Property, we understand the human side of property. Our service focuses on making things simpler and easier for real people, because everything we do is about making a real difference to people's lives and caring deeply about how they will benefit.

The difference is **real**.



CITTA PROPERTY GROUP

A specialised property development group focused on large-scale, mixed-use projects, Citta's directors bring more than 60 years of combined experience, having been responsible for managing a number of Australia's most innovative and successful developments.

Citta offers expertise in planning and design, financial structuring, development, project management, sales, leasing and marketing of both private and public sector projects.



JACKSON CLEMENTS BURROWS ARCHITECTS

Jackson Clements Burrows Architects (JCB) is based in Melbourne Australia. We are a design focused studio committed to the delivery of exceptional architecture and design.

JCB was established in 1998 by Tim Jackson, Jon Clements and Graham Burrows to form a collaborative team with a shared commitment to the exploration of innovative architecture driven by environmentally sustainable design principles.

We currently employ approximately 50 architects and interior designers with a diverse range of project experience. Our team are encouraged to adapt and innovate through the exploration of opportunity ensuring that every project is unique to its own circumstances. Our design concepts are never pre-conceived, ensuring that the practice continues to deliver site sensitive architecture which engages with local climatic conditions and adapts to contextual opportunities.

JCB's projects have been widely recognised through extensive coverage in leading Australian and International design journals and publications. Our work has also been acknowledged through the receipt of numerous Australian Institute of Architects and industry awards for an extensive portfolio of residential, commercial, institutional, interior and urban design projects.

Most recently JCB was awarded the highest accolade at the 2015 Victorian Architecture awards, winning in the Multiple Housing, Urban Design and Small Project categories. The practice also received an Educational Architecture Award and a Residential (New) Architecture Commendation.



Upper House Carlton - Winner of AIA Victorian Chapter Best Overend Award (Multiple Housing)

Artists' Impression



Harold St. Residence, Middle Pk - Winner of AIA Victorian Chapter Residential Architecture New Architecture Award in 2012.



Reside.Carlton, Keppel St.

Artists' Impression

JACKSON ARCHITECTURE

Jackson Architecture is a highly awarded national practice of architects, master planners, urban and interior designers, motivated by the desire to provide stimulating environments that facilitate all aspects of human endeavour.

Established in Melbourne in 1965, the practice has since opened design offices in Sydney, Canberra and Brisbane. It has developed a reputation for providing high quality consultation based designs with the ability to synthesise the challenges of form, space, expression, light, function, efficiency, amenity, cost, time and value for money.

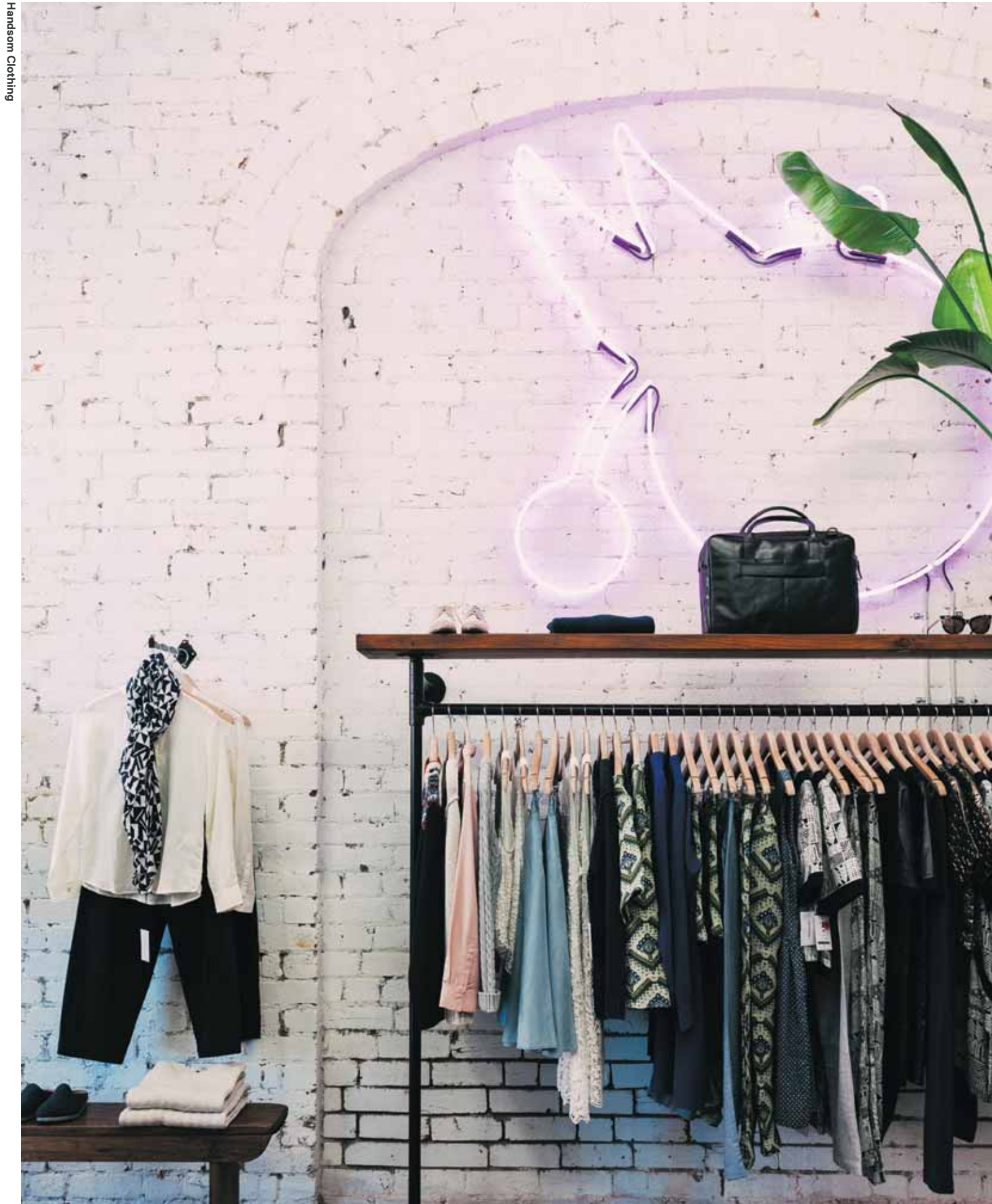
Over the last seven years, working collaboratively with the Living Carlton Consortium, Jackson Architecture has led the master planning and execution of the State Government's innovative and intelligent response to city housing regeneration in Carlton.

Located across three separate sites the nine stage project is almost complete. Outworn "public" housing stock, first built some 40 to 50 years ago has been renewed.

The executing architect for all nine stages, Jackson Architecture has designed a number of the new apartment buildings. It has bought the Keppel Street heritage building fabric back to life, creating 20 new houses and a community chapel.

Working closely with Australian Unity, Jackson Architecture has created a new, sophisticated and respectful approach to aged care in the Rathdowne Place Aged Care and Wellness Centre.

The practice has been recognised with numerous awards from the Royal Australian Institute of Architects, including the prestigious Sir Zelman Cowen Award (the Australian national award for the most outstanding architectural work) on an unsurpassed three occasions. Landmark buildings include the MCG (Northern and Southern Stands), Victorian County Court and National Tennis Centre and Eastern Plaza, Melbourne Park.



Handsom Clothing

HANDSOM CLOTHING
163 Gertrude St, Fitzroy

A boutique that represents all the easy cool of the gallery-dotted, fashion-forward Gertrude Street strip. Handsom does men's and women's clothing and accessories. It is classic, effortless and the quality will last you. The store's fit-out represents all of this. A hot-pink neon logo on the wall pops against the otherwise neutral colours of the polished-concrete of the floor and shelving.

PRESSED JUICES
231 Gertrude St, Fitzroy

Pressed Juices are 100% natural and made fresh daily – a very convenient way to get some goodness into you. This boutique purveyor of juice offers cleanses and flavours such as the Antiox 2 (orange, raspberry, pomegranate, turmeric) and chocolate almond mylk (filtered water, almonds, dates, cacao, sea salt). The beautiful timber-centric store looks just like the place the healthy among us frequent.

TAIT
176 Johnston St, Fitzroy

Tait is a truly local business. It is owned and run by husband and wife Gordon and Susan Tait, and its hardy indoor/outdoor furniture is made in Melbourne. The modern and sleek design of Tait's pieces mean it is a favourite of hospitality legends, and it is used at MONA in Tasmania. Find colourful planters, bird houses, wall decorations, cushions and outdoor umbrellas for your patch.



Pressed Juices



Tait

'The best way to get around the inner north is on two wheels.'

TOKYOBIKE



Breakfast Thieves

BREAKFAST THIEVES
420 Gore St, Fitzroy

Away from the obvious strips, this café is a brunch favourite. The space is open and dressed in Melbourne's café uniform: white tiles, a polished-concrete floor and timber – but the look is ubiquitous because it's good. From the menu try the Geisha & French Affair: brioche French toast with saffron-poached pear, black-sesame paste, matcha-and-white-chocolate mousse, candied bacon and raspberry crispsies.

TOKYOBIKE
5 Peel St, Collingwood

The best way to get around is on two wheels (handle-bar streamers optional). On a tokyobike you'll be cruising around in style. These bikes are designed for urban life; they're light, agile and design-driven, so comfort trumps speed. The bright, airy showroom lines up the distinctive, very-good-looking bikes and accessories in a space that feels a bit like Japan.



tokyobike



ROSE STREET ARTISTS' MARKET

‘Leave the obvious retail strip behind and get your next signature piece straight from the source.’

THE ROSE STREET ARTISTS' MARKET 60 Rose St, Fitzroy

Its tagline is “for all things homemade”, but a place to find a daggy jumper like the one knitted by your gran, this is not. Established and emerging designers come here to sell their wares to a discerning, design-focused audience. Leave the obvious retail strip behind and get your next signature piece of furniture, jewellery clothing and more straight from the source.

TRANSFORMER 99 Rose St, Fitzroy

This vegetarian restaurant just off the main drag of Brunswick Street serves considered, beautiful and inventive food that is best for sharing. Its industrial-meets-architecturally designed space, with greenery, dimmed lighting and a party atmosphere suits perfectly the building it is housed in; an old electricity station. Try the spelt-and-seed steamed bun with crispy organic tofu, pickled cucumber and gochujang mayo.



Transformer



Carlton Baths

CARLTON BATHS 248 Rathdowne St, Carlton

Refurbished a couple of years ago, this pool and fitness centre is a refuge for inner-city locals in summer, and a lap-swimmers haven during the colder months. There is a heated 25-metre lap pool and a toddlers pool. It also has gym facilities and regular classes and programs. Bright, light, convenient and no-fuss – your local will make exercising a pleasure.



MARK TUCKEY 231 Johnston St, Fitzroy

This Australian furniture company is renowned for the design integrity of its solid-timber furniture. This inspiring Johnston Street furniture showroom also displays lighting, artwork, mirrors and seating – all made in Melbourne. These are pieces to last a lifetime that will give you pleasure every day.

THE LOCAL BURGER CO 687 Rathdowne St, Carlton

Burgers. Fries. Shakes. Fried chicken. There's something to be said for having a solid burger option in your neighbourhood. And the Local Burger Company is it. There is plenty here for carnivores (The Big Burger) vegetarians (mushroom or chickpea patties) and those who want to forgo the bread but don't want to miss out (Nude Burger).



The Local Burger Co

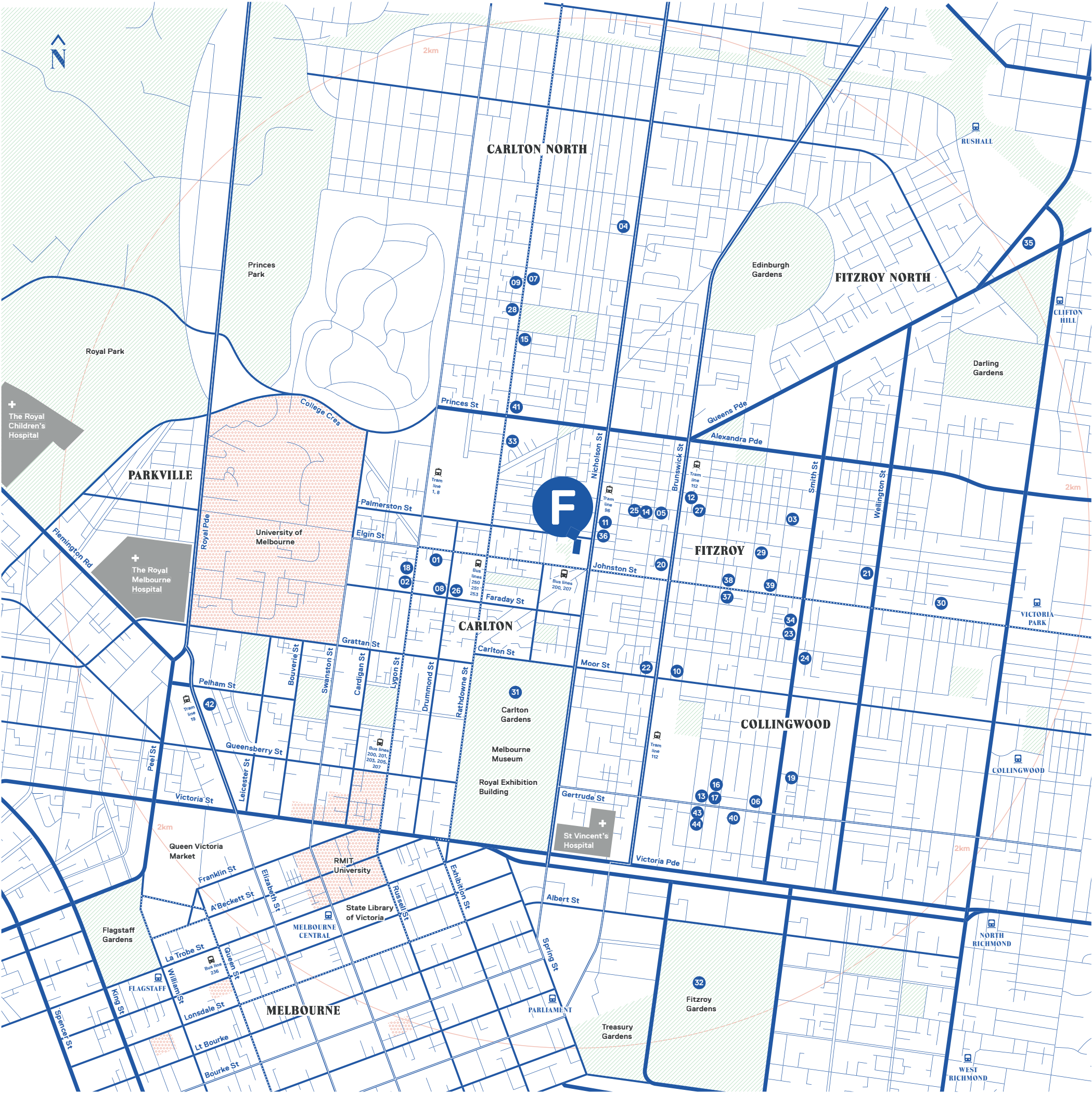
FOUND

At the heart of urban living.

30

31





Cafés/Foods

- 01. The Vertue of the Coffee Drink
- 02. Pidapipó
- 03. Breakfast Thieves
- 04. Arkwright & Co
- 05. Grace Café
- 06. Pressed Juices

Groceries

- 07. Skinner & Hackett
- 08. Baker D.Chirico
- 09. Clay Fine Food & Health
- 10. Smith & Deli

Shopping

- 11. TheSuperCool
- 12. Fitzroy Nursery
- 13. Handsom Clothing
- 14. Rose St Market
- 15. The LAB organics
- 16. Third Drawer Down
- 17. Mud
- 18. Readings
- 19. tokyobike
- 20. Kleins Perfumery
- 21. Easey's
- 22. Grub Hole
- 23. Hell of the North
- 24. Sugar Prawn
- 25. Young Bloods Diner
- 26. The Town Mouse
- 27. Transformer
- 28. The Local Burger Co.

Galleries

- 29. Centre for Contemporary Photography (CCP)
- 30. Lamington Drive

Gardens & Recreation

- 31. Carlton Gardens
- 32. Fitzroy Gardens
- 33. Carlton Baths


Furniture Stores

- 34. Modern Times
- 35. Dowel Jones
- 36. Engrain
- 37. Tait
- 38. Great Dane
- 39. Mark Tuckey
- 40. Tarlo & Graham
- 41. Innovation Living
- 42. Cult


Bars

- 43. The Everleigh
- 44. Bar Clarine


Legend




Parklands




Universities




Hospitals



Tram routes



Train stations



Bus routes